

Dear Consultee,

## **CONSULTATION ON APPLICATION RECEIVED FOR A MARINE LICENCE**

The Marine Management Organisation (MMO) has received an application for a licence under the Marine and Coastal Access Act 2009 Part 4. A copy of the application, and supporting documents, is available for you to view on the web page below.

### **What is the scope of this consultation?**

You are invited to respond by commenting on the proposals in the application. Your views are particularly welcome on the questions and provisions contained in:

- **Marine And Coastal Access Act 2009 Part 4, s.69 (1):**

1. The protection of the environment.
2. The prevention of interference with other legitimate uses of the sea.
3. The minimisation of noise and nuisance.
4. The potential risks to navigational safety, such as obstruction or endangerment.
5. The need for special lighting or markings.

- **Marine Works (Environmental Impact Assessment) Regulations 2007 (as amended):**

The MMO is required by these Regulations to consult with bodies that it considers to have an interest in the applicant's proposals by reason of their environmental responsibilities.

We have screened this application proposal out under this Directive as requiring an EIA. Should you disagree with this opinion, then please let us know why, citing the relevant sections of the corresponding legislation.

### **Submitting your consultation response**

Please submit your response via email to [offshore.renewables@marinemanagement.org.uk](mailto:offshore.renewables@marinemanagement.org.uk) or [margaret.tierney@marinemanagement.org.uk](mailto:margaret.tierney@marinemanagement.org.uk). Any proposed license conditions (and their corresponding rationale) should be included in your response.

### **Consultation deadline**

The deadline for submitting your response is **31<sup>st</sup> Oct 2011**. If you have substantive comments, but are unable to submit them by the deadline, then please contact us to see if any extension can be offered. If we do not receive your reply by the due date, then we will assume you have no comment to make and proceed to determine the application.

### **Public Register**

Please note that any information you provide in response to this application may be published on the MMO's Public Register.

Thank you.

**Ross Hodson**  
**Marine Licensing Team,**  
**MARINE MANAGEMENT ORGANISATION.**

33383/10

© Buro Happold Limited or its group companies.  
All Rights reserved. Buro Happold and its group companies assert (unless otherwise agreed in writing) their rights under s.77 to 80 of the Copyright, Designs and Patents Act 1988.

DO NOT SCALE THIS DRAWING.

HEALTH AND SAFETY INFORMATION

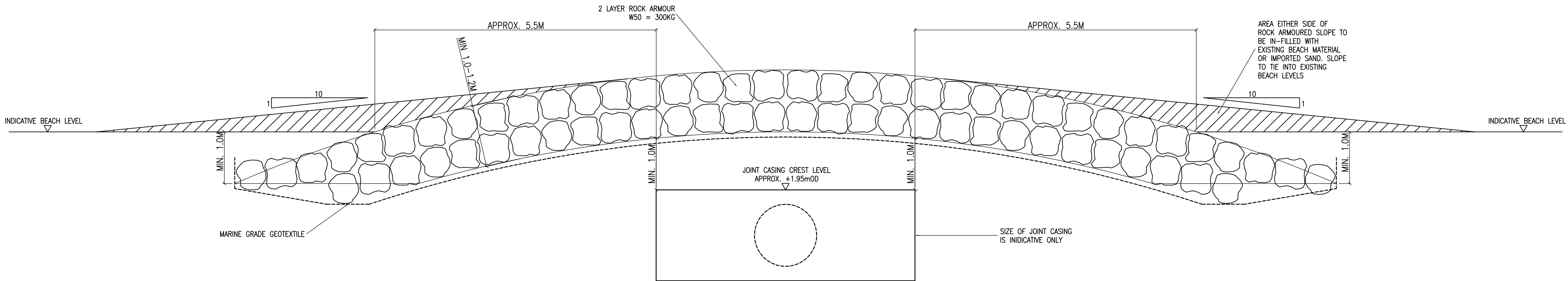
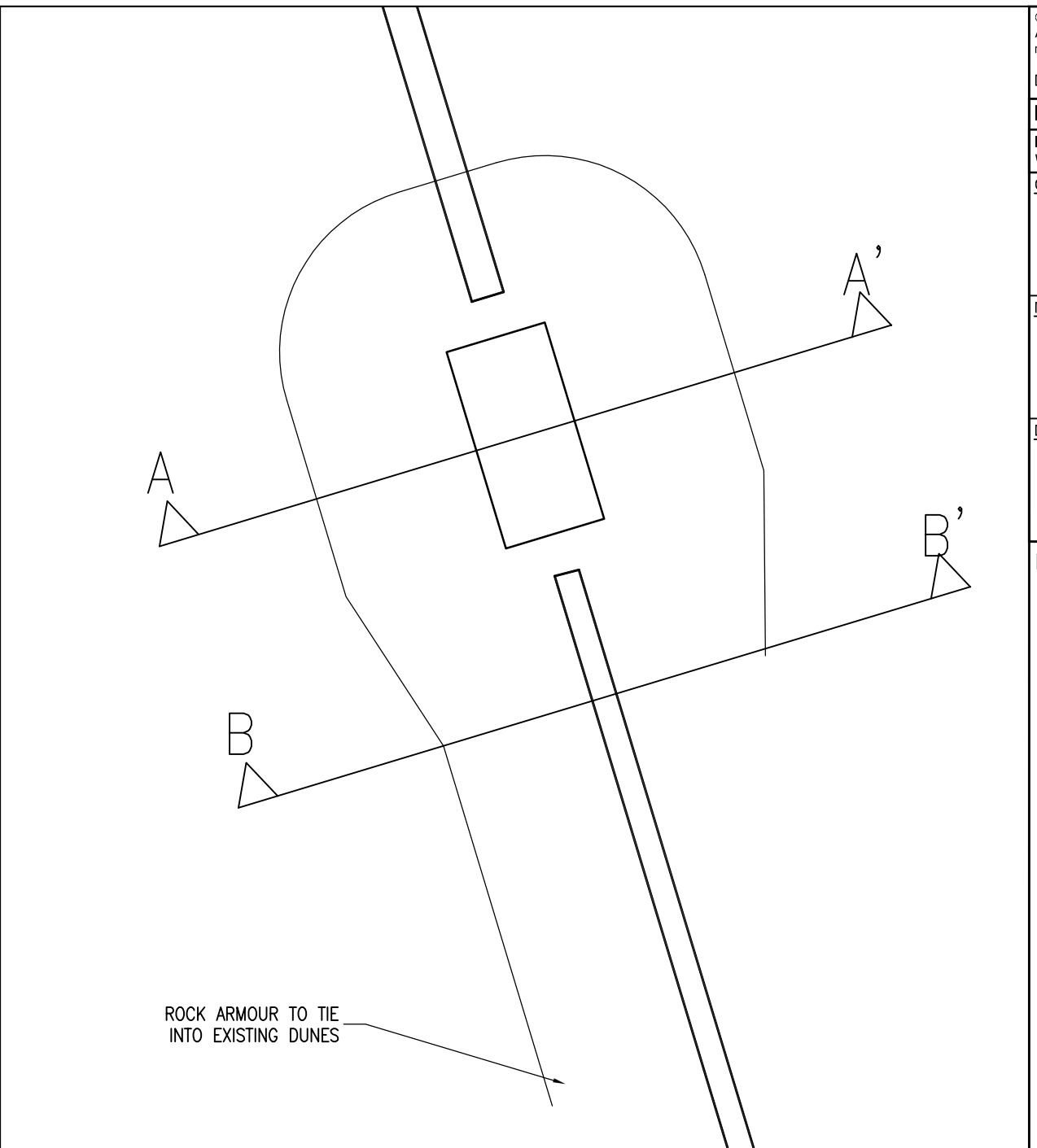
IN ADDITION TO THE HAZARDS/RISKS NORMALLY ASSOCIATED WITH THE TYPES OF WORK DETAILED ON THIS DRAWING, NOTE THE FOLLOWING CONSTRUCTION.

MAINTENANCE/CLEANING/OPERATION.

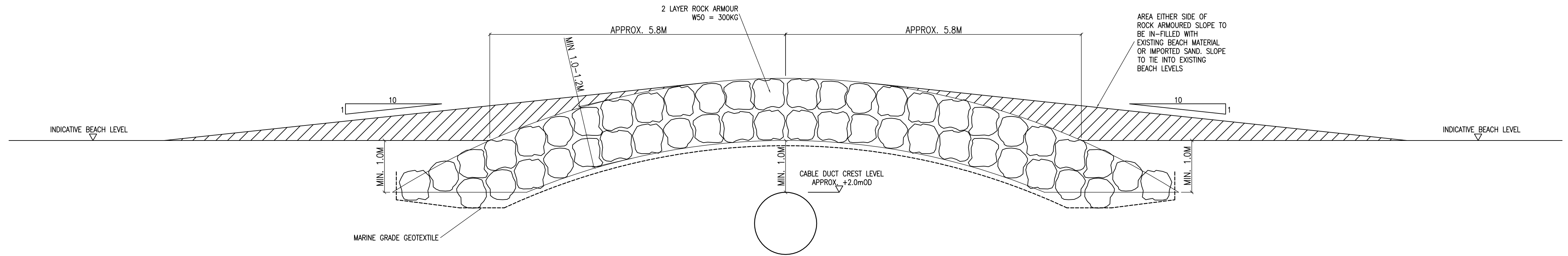
DECOMMISSIONING/DEMOLITION.

Notes

1. FOUNDING MATERIAL, IF ANY, TO BE DEFINED BY CONTRACTOR.
2. SUITABLE SPARE BAGS (EMPTY) TO BE PROVIDED.
3. NOURISHMENT MATERIAL TO BE WON FROM AGREED LOCATION.



SECTION A-A' - CABLE DUCT



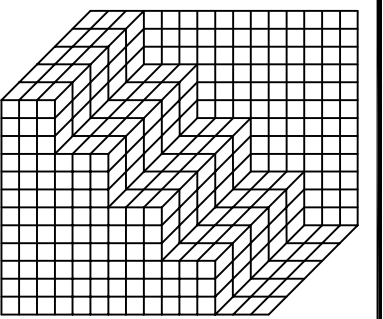
SECTION B-B' - CABLE DUCT

INFORMATION

Status of drawing

Camden Mill  
Lower Bristol Road  
Bath BA2 3DQ  
UK

Tel: +44 (0)1225 320600  
Fax: +44 (0)870 787 4148  
Email: 001234@burohappold.com  
Web: www.burohappold.com



**Buro Happold**  
Consulting Engineers

Architect

Project **WAVE HUB**  
Drg Title **WAVE HUB EMERGENCY PROTECTION WORKS**  
**Rock Armour - Cross Sections**

Scales@A1

Drawn by SM  
Checked by AT

Date 29.09.11

Job No.

**029094**

Drawing No.

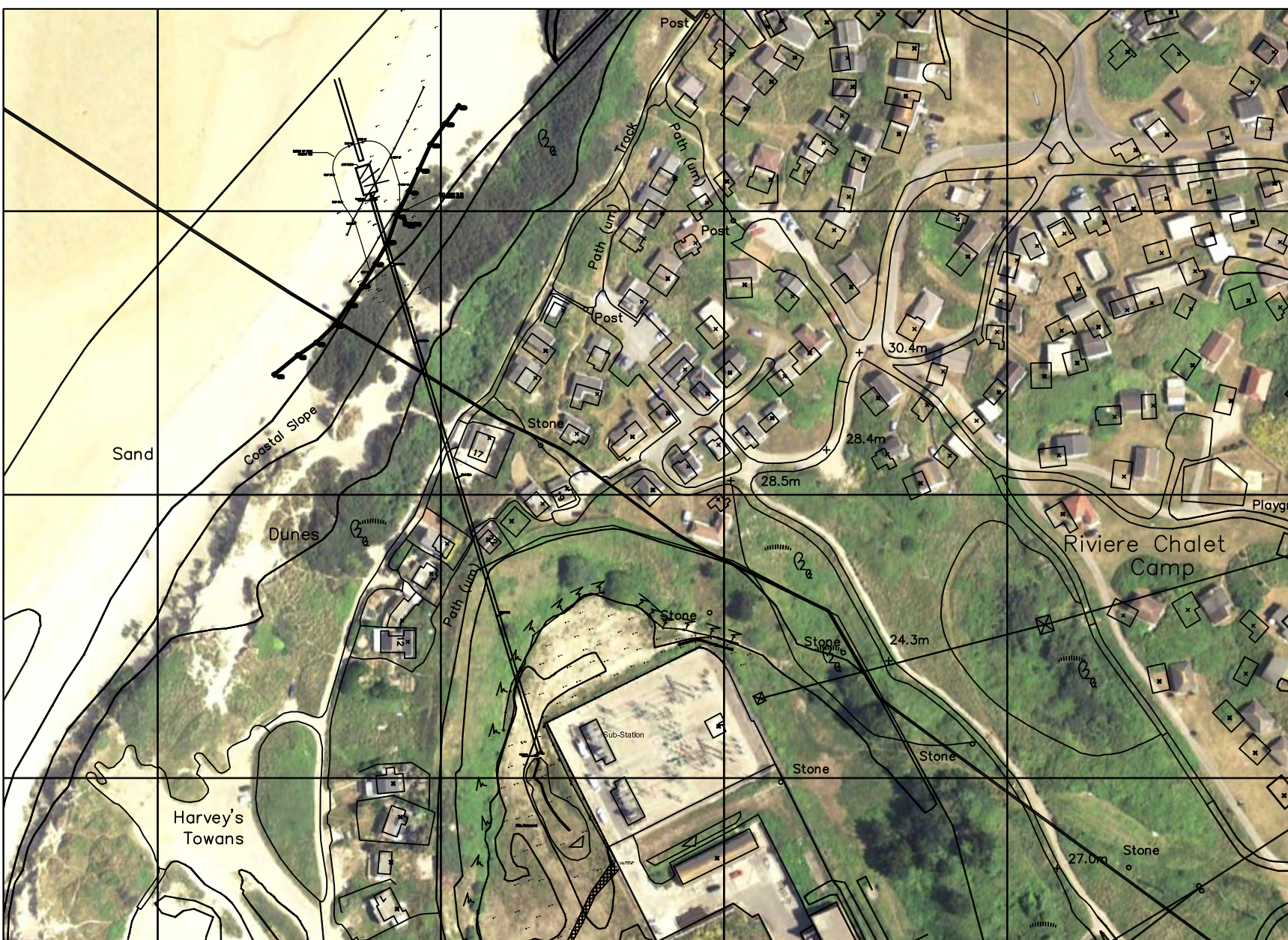
**W\_SK08**

Rev

**01**

Sheet: 0001 of 01 - Wave Hub Emergency Protection Works - Rock Armour - Cross Sections





## SETTING OUT COORDINATES

© Buro Happold Limited or its group companies.  
All Rights reserved. Buro Happold and its group companies assert (unless otherwise agreed in writing) their rights under s.77 to 89 of the Copyright, Designs and Patents Act 1988.

## HEALTH AND SAFETY INFORMATION

IN ADDITION TO THE HAZARDS/RISKS NORMALLY ASSOCIATED WITH THE TYPES OF WORK DETAILED ON THIS DRAWING, NOTE THE FOLLOWING CONSTRUCTION.

### MAINTENANCE/CLEANING/OPERATION

### DECOMMISSIONING/DEMOLITION

## Notes

01	FOR INFORMATION	30.09.11	SM	A
00	FOR INFORMATION	29.09.11	SM	A
Rev	Description	Date	Drn	Chg

## INFORMATION

Status of drawing

Camden Mill  
Lower Bristol Road  
Bath BA2 3DQ  
UK

Tel: +44 (0)1225 320600

Fax: +44 (0)870 7

Em

Web: [www.burohappold.nl](http://www.burohappold.nl)

Architect

\_\_\_\_\_

Project **WAVE HU**Drg Title **WAVE HUB EMERGENCY**

## WAVE TIDE EMERGENCY PROTECTION WORKS

### PROTECTION WORKS

#### Back Armour General Arrangement

### Rock Armour General Arrangement

Job No.	000004
---------	--------

Scales@A1 1:250

Drawing No. **111-01607**

Simon Mudd P:\029094\F34 - Water\Sheet\Sketches\W\_SK07.dwg 28/02/2008 DMF6 EPI601.doc3